



HettCube INCUBATORS AND COOLED INCUBATORS

SUSTAINABLE. ERGONOMIC. HIGH QUALITY.



www.hettichlab.com

Hettich

INCUBATOR

THE HettCube RANGE



GET THE MOST OUT OF YOUR INCUBATORS.

ENVIRONMENTALLY FRIENDLY, ECONOMICAL AND WELL DESIGNED: THE NEW HettCube RANGE OF INCUBATORS WILL BENEFIT BOTH YOUR BALANCE SHEET AND THE ENVIRONMENT, AS WELL AS PROVIDING OPTIMUM GROWTH CONDITIONS FOR YOUR CULTURES.

Hettich laboratory equipment is now ubiquitous in laboratories devoted to research, quality assurance and routine diagnostics around the world. Our products – firmly established in the marketplace – are subject to continuous development and are adapted to suit the individual requirements of our customers. The development of the HettCube range is based on over 100 years of experience and expertise in laboratory technology. HettCube models not only meet our rigorous standards and yours, they also respect the needs of the environment. We guarantee you an optimised eco-balance, ease of use and superb quality.



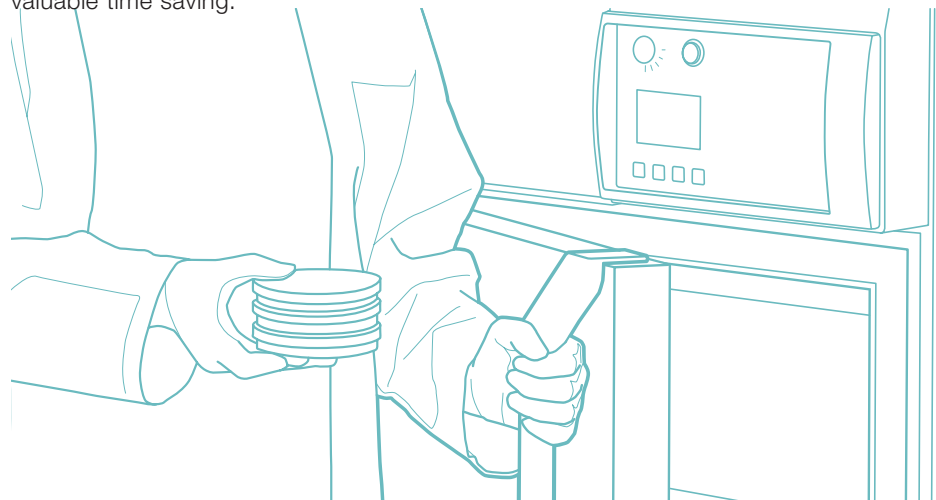
EXCELLENT ECO-BALANCE.

Lower power consumption, reduced operating costs, lower environmental impact. The HettCube models only heat and cool as necessary. At an operating temperature of 37 °C, they consume less than 0.05 kWh. This saves energy and benefits your balance sheet, as well as protecting the environment. In addition, the HettCube insulation is made of water-blown foam, which contains no fluorinated hydro-carbons. Its Global Warming Potential (GWP) is one-thousandth that of conventional insulating foams.



EASY OPERATION.

The HettCube range is characterised by exceptional functionality and customised features, so that you can load and unload them without difficulty. The doors close automatically at an angle of less than 90°. Since the doors do not require space to the side to open, the incubators can be positioned in corners or directly next to other laboratory equipment. All of the internal components and fittings are made from stainless steel and can be readily removed. Perfect ergonomics for greater convenience and valuable time saving.



TESTED QUALITY.

The HettCube range is manufactured in Germany. We aim to deliver exemplary quality, so we only use parts and materials from selected suppliers and high-quality manufacturers. Quality and environmental management systems complying with ISO 9001, ISO 13485 and ISO 14001 standards are used in the development, production and marketing of HettCube models. All temperature data were ascertained in accordance with DIN 12880:2007-5. You can rely on us 365 days of the year.



MORE BENEFITS FOR YOU



THE MOST IMPORTANT ADVANTAGES OF OUR THREE MODELS ARE PRESENTED BELOW. HettCube INCUBATORS WILL CATER FOR ALL YOUR REQUIREMENTS. SEE FOR YOURSELF.



CREATE CONNECTIONS

One bushing on the rear panel is provided as standard.



SAVE SPACE

The door does not require space at the side to open. This means that the incubator can be positioned in a corner or close to other lab equipment. The door hinges can easily be moved from one side of the incubator to the other.



STAY MOBILE

The HettCube 400 and 600 models have castors for moving them to the desired position. Once in position they can be fixed with adjustable feet.



PROTECT THE ENVIRONMENT

HettCube incubators can also operate at a temperature 1 K above a stable ambient temperature. This allows a HettCube incubator to be used without cooling in situations in which incubators from other manufacturers must have cooling.

SAVE MONEY

At an operating temperature of 37°C, a HettCube consumes less than 0.05 kWh.



OPTIMUM SAFETY

The practical door-locking mechanism locks both the door and the control panel at the same time. This prevents inadvertent changes to parameters and harmful effects on cultures.



CLOSING BY ITSELF

A HettCube incubator will close automatically at an opening angle below 90°. A magnetic mechanism assists this automatic closing.



UNIMPEDED ACCESS

Loading and unloading of the incubators is much easier because there is no inner door.

Optional shelves and drawers run on telescopic rails and can be pulled out up to 70%.



SAFE GRIP

Rounded grips on the standard shelves keep your gloves safe from ripping.



REMARKABLY QUIET

The fan is located outside the usable space. So HettCubes generate a remarkably low noise level of ≤ 44 dB(A).

EASY CLEANING

The internal lining, drawers and shelves are made of stainless steel and can be readily removed for thorough cleaning and autoclaving.



PERFECT CONDITIONS



TEMPERATURE CONTROL PRINCIPLE

CONSTANT TEMPERATURE. HOMOGENEOUS TEMPERATURE DISTRIBUTION.

Our guardians of culture: the HettCube range combines the advantages of natural and forced convection. The fan is housed outside the usable space, so that there is a low air flow inside the incubator. The temperature is maintained by radiated heat, preventing the formation of hot spots. Cultures do not dry out and the conditions inside the incubator are the same at all points, helping to deliver reproducible results. This sophisticated air circulation system, along with the good insulation, makes an inner door unnecessary.



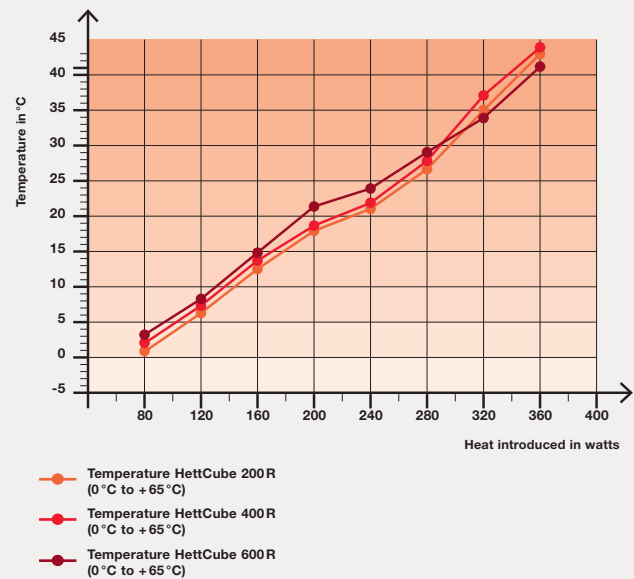
HEAT COMPENSATION

RELIABLE COMPENSATION OF TEMPERATURE DIFFERENCES BETWEEN THE INSIDE AND OUTSIDE

HettCube models react to changes in ambient conditions. Temperature fluctuations outside the incubator and energy introduced into the usable space by external equipment are compensated for immediately and actively.

Heat compensation of the HettCube 200 R / 400 R / 600 R

Lowest attainable temperature values upon introduction of equipment with different heat outputs.



The data apply for equipment with standard features.

VALIDATED USABLE VOLUME

MORE VALIDATED USABLE VOLUME. FOOTPRINT REDUCED BY UP TO 50 %.

In the laboratory every centimetre counts. For this reason, we decided against a strong air flow, which achieves validated temperature homogeneity in only 50 % of the interior space, and opted for gentle air flow. This, along with our highly efficient, space-saving insulation, allows you to benefit from a maximum validated usable volume and a minimum footprint.

Interior
Validated usable volume according to DIN 12880:2007-05

Gentle air flow: large validated usable volume. Guaranteed temperature homogeneity according to DIN 12880:2007-05.

Space-saving high-performance insulation provides additional usable interior space.

Small footprint.

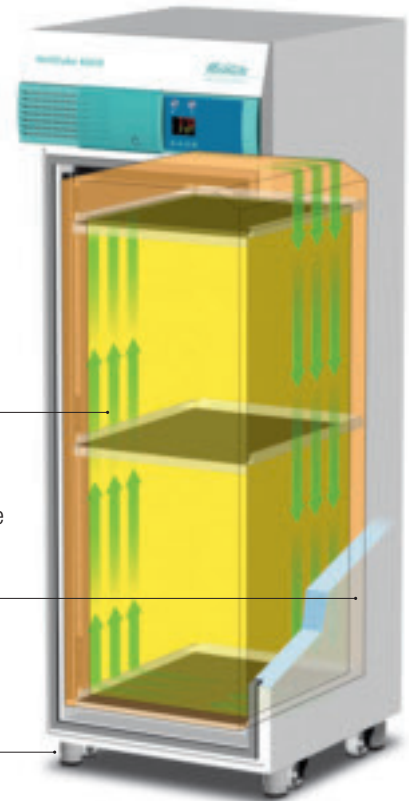


Illustration: Stefan Lobreyer

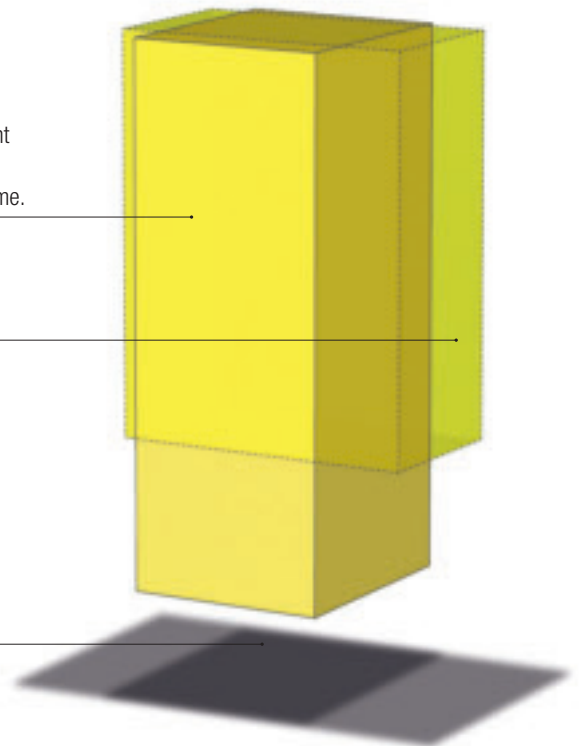
HettCube incubators pay off:

HettCube	Competitor
Gentle air flow + High-performance insulation + Small footprint =	Strong air flow + Bulky insulation + Large footprint =
Maximum loading capacity + cost savings per m ² laboratory space	Low loading capacity + higher costs per m ² laboratory space

HettCube:
High design = low space requirement and 20 – 30 % more validated usable volume.

Competitor

HettCube:
footprint reduced by up to 50 %.



PRACTICAL ACCESSORIES AND COMPLETE SOLUTIONS

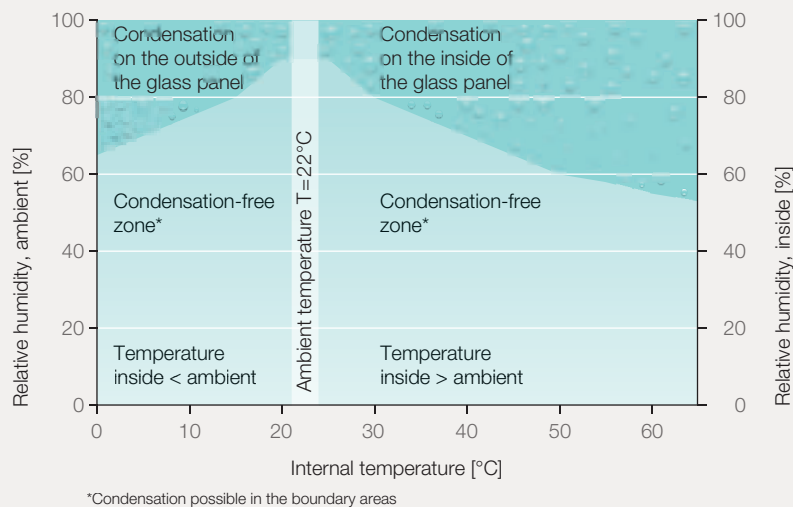


HETTCUBE INCUBATORS WITH GLASS DOOR

The glass door enables users to check on their cultures without opening the door. The contents of the incubator can be easily reached since there is no additional inner door. The well-conceived air-guiding system makes this possible.



Condensation diagram for HettCubes size 200/400/600 with glass door at an ambient temperature of +22°C



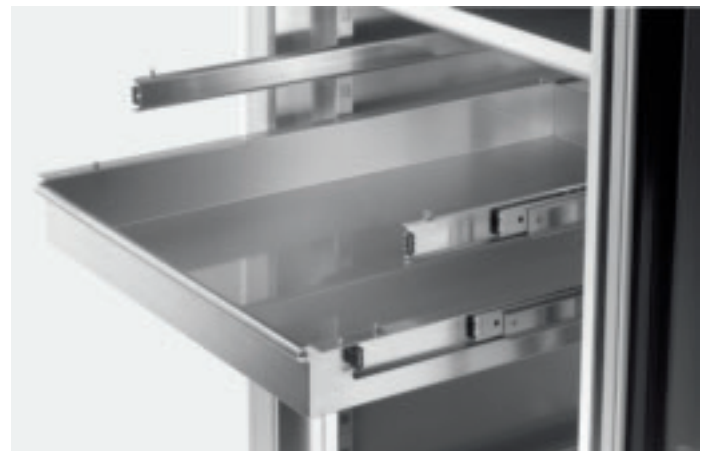
HettCube 600 and 600 R with glass door

Cat. No. 60013

HETTICH TRAY SYSTEM (HTS)

The Hettich Tray System, which fits in all three incubator sizes, allows the internal space of the HettCube to be used optimally. The trays, drawers, holders and rails are separate components. You just hang the rails in the grids of the holders and put in the tray or drawer of your choice. The telescopic rails allow the trays and drawers to be pulled out by up to 70%. The shelves are seal-welded. All of the components can be autoclaved in case of contamination.

Purchase information is provided on page 11.



HETTICH-RACK_L AND HETTICH-RACK_{XL} (LÖWENSTEIN) FOR 16 TUBES *

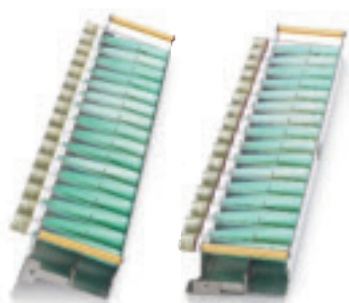
These flexible racks simplify handling, save time and enable the use of

- tubes of different diameters (15 - 20 mm)
- tubes of different lengths (100-125 mm or 126-170 mm)

- different slant angles ** (5° or 20°).

The slant angle of the tubes can be very easily changed without the need for tools.

The racks are of high-quality stainless steel and can be autoclaved.



Hettich-Rack_L

for tubes of length 100 - 125 mm, Handle of gold colour

Cat. No. 60027



Hettich-Rack_{XL}

for tubes of length 126 - 170 mm, Handle of champagne colour

Cat. No. 60028

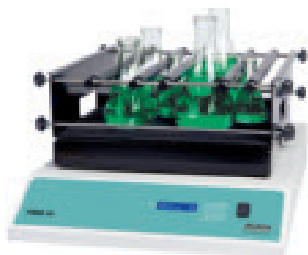
HETTICH ORBITAL SHAKER (HSM 10) SETS TO FIT IN HETTICH INCUBATORS WITH AND WITHOUT COOLING *

The robust metal casing of the shaker enables it to withstand temperatures up to + 65°C and ensures a long service life.

It is available with different platforms depending on the microbiological application. Each combination of shaker and platform is a complete unit.

TECHNICAL DATA HSM 10

- Shaking frequency: 50-250 rpm
- Max. Load: 10 kg
- Dimensions (WxDxH): 410x595x140 mm
- Timer



HSM 10 (**set 1**) including the universal platform (5 tension rollers) for different vessels

Cat. No. 60905



HSM 10 (**set 2**) including platform (antislip mat) for a wide range of containers

Cat. No. 60906



HSM 10 (**set 3**) including platform for Erlenmeyer flasks, with a set of 18 clamps of different sizes

Cat. No. 60907

*) More information is available from info@hettichlab.com or can be downloaded from our website www.hettichlab.com

**) The slant of the agar increases the surface area available for growth. It is necessary to use test tubes to hold the agar for micro-organisms that grow very slowly to avoid the cultures drying out.

STANDARD FEATURES AND OPTIONS



STANDARD FEATURES

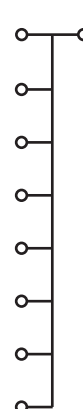
- RS 485 / 422 interface
- Microprocessor controller with program functions: Protection against temperatures above or below the set value. Temperatures can be set with an accuracy of 0.1 °C.
- Potential-free alarm output
- Acoustic and visual alarms
- Temperature selection monitor class 3.1
- Bushing on rear panel
- Control panel and door lockable simultaneously
- Interior of high-quality stainless steel (W-St 1.4301 (ASTM 304))
- one HTS tray (with telescopic rails)
- Factory certificate based on the Hettich QM system, mean value of 9 measurement points as per DIN 12880:2007-05 at 37 °C



OPTIONS AND ACCESSORIES

Customise your HettCube model to suit your individual requirements. The optional Hettich components satisfy the same high quality requirements as the incubators.

	Cat. No.
USB converter incl. connecting cable and software for programming and recording (60901)	60501
Ethernet converter incl. connecting cable and software for programming and recording (60901)	60502
Software for programming and recording data for a HettCube incubator for up to 60 days	60901
Independent, flexible PT 100 sensor (4-wire) with 4 – 20 mA analogue output on the rear panel, with external alarm monitoring for recording temperature in the event of a power failure (LIM compatible)	60503
Independent, flexible PT 100 sensor (4-wire) with 4-pole connection on the rear panel (LIM compatible)	60504
Object temperature display with flexible PT 100 sensor (4-wire), with data logging by Hettich software	60505
EU internal socket outlet IP 54, max. load 400 watts, without residual current device	60511
EU internal socket outlet IP 54, max. load 400 watts, with residual current device (10 mA)	60515
US internal socket outlet NEMA 5-15 R, IP 54, max. load 400 watts, without residual current device	60508
US internal socket outlet NEMA 5-15 R, IP 54, max. load 400 watts, with residual current device (10 mA)	60512
UK internal socket outlet BS 1363, IP 54, max. load 400 watts, without residual current device	60509
UK internal socket outlet BS 1363, IP 54, max. load 400 watts, with residual current device (10 mA)	60513
CH internal socket outlet SEV 1011, IP 54, max. load 400 watts, without residual current device	60510
CH internal socket outlet SEV 1011, IP 54, max. load 400 watts, with residual current device (10 mA)	60514



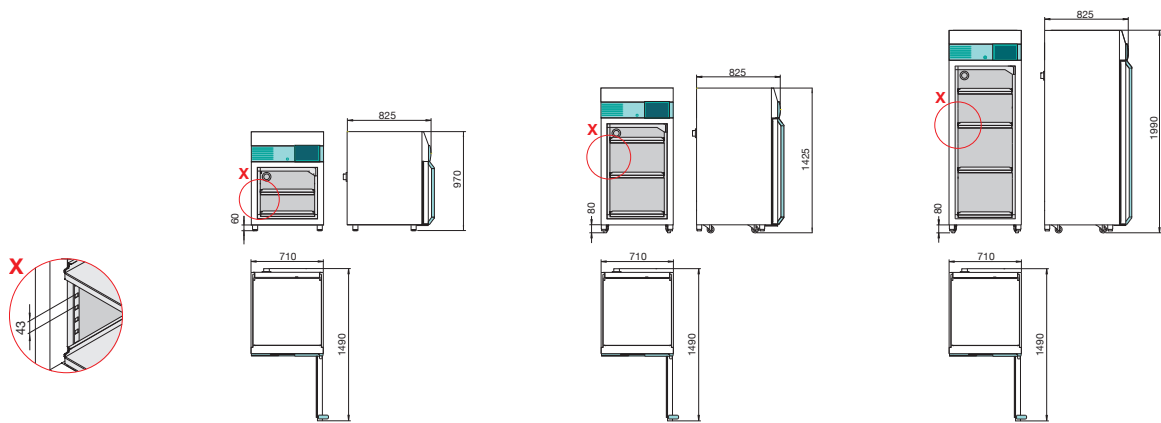
Weitere Optionen auf Anfrage.

OPTIONS AND ACCESSORIES

	Cat. No.
Bushing on the left side of the incubator, Ø 22 mm	60006
Bushing on the left side of the incubator, Ø 42 mm	60007
Bushing on the left side of the incubator, Ø 67 mm	60008
Stacking kit, for safe stacking of two HettCube 200 or 200 R models on top of each other	60009
Tray of stainless steel with guide rails of stainless steel (standard tray)	60001
HTS tray of stainless steel with telescopic rails, pulls out up to 70 %, max. load 40 kg	60031
HTS drawer of stainless steel with telescopic rails, pulls out up to 70 %, max. load 40 kg, height 30 mm	60024
HTS drawer of stainless steel with telescopic rails, pulls out up to 70 %, max. load 40 kg, height 65 mm	60025
HTS drawer of stainless steel with telescopic rails, pulls out up to 70 %, max. load 40 kg, height 105 mm	60026
Separate interlocking of the control panel	60014
Glass door for HettCubes size 600	60013
Glass door for HettCubes size 400	60029
Glass door for HettCubes size 200	60030
Hettich-Rack _L for tubes of length 100-125 mm	60027
Hettich- Rack _{xL} for tubes of length 126-170 mm	60028
Hettich orbital shaker HSM 10 (set 1) incl. universal platform with 5 tension rollers	60905
Hettich orbital shaker HSM 10 (set 2) incl. antislip mat	60906
Hettich orbital shaker HSM 10 (set 3) incl. platform for Erlenmeyer flasks (incl. 18 clamps)	60907
Rolling cabinet for a HettCube 200 or 200 R model	60010



HIGH PERFORMANCE: THE TECHNICAL DATA



All dimensions in mm

MODEL	HettCube 200	200 R	HettCube 400	400 R	HettCube 600	600 R
Temperature range for incubators / cooled incubators	1 K above ambient temperature up to + 65 °C / 0 °C to + 65 °C					
Exterior dimensions (without bushing and door handle) W x D x H in mm	710 x 825 x 970		710 x 825 x 1425		710 x 825 x 1990	
Interior dimensions W x D x H in mm	535 x 690 x 420		535 x 690 x 850		535 x 690 x 1415	
Internal volume in litres	150		310		520	
Footprint in m ²	0.6		0.6		0.6	
Weight in kg	88	99	113	124	163	174
Number of trays provided as standard	2 (1 standard + 1 HTS)		3 (2 standard + 1 HTS)		4 (3 standard + 1 HTS)	
Temperature fluctuation at + 37 °C	± 0.1 K					
Temperature uniformity at + 37 °C	± 0.2 K					
Temperature uniformity at + 25 °C	± 0.1 K					
Recovery time after door has been opened for 30 s at + 37 °C	≤ 3 min		≤ 4.5 min		≤ 5.5 min	
Energy consumption at + 37 °C	0.025 kWh		0.038 kWh		0.049 kWh	
Noise level	≤ 41 dB(A)	≤ 44 dB(A)	≤ 41 dB(A)	≤ 44 dB(A)	≤ 41 dB(A)	≤ 44 dB(A)
Power supply	220–240 V 1 ~ / 50–60 Hz					
Cat. No.	62000	62005	64000	64005	66000	66005
OTHER VOLTAGES	Cat. No.					
120 V 1 ~ / 50–60 Hz	62000-01	62005-01	64000-01	64005-01	66000-01	66005-01
110 V 1 ~ / 50–60 Hz	62000-03	62005-03	64000-03	64005-03	66000-03	66005-03
100 V 1 ~ / 50–60 Hz	62000-04	62005-04	64000-04	64005-04	66000-04	66005-04
127 V 1 ~ / 50–60 Hz	62000-05	62005-05	64000-05	64005-05	66000-05	66005-05
Weight in kg*	98	109	123	134	173	184
Energy consumption at + 37 °C*	0.04 kWh		0.05 kWh		0.06 kWh	
Noise level*	≤ 42 dB(A)	≤ 44 dB(A)	≤ 42 dB(A)	≤ 44 dB(A)	≤ 42 dB(A)	≤ 44 dB(A)

*All other data are the same as for the product versions with standard voltage (220–240 V 1 ~ / 50–60 Hz).



All temperature values were ascertained at an ambient temperature of + 22 °C in accordance with DIN 12880:2007-5. The data apply for incubators with standard features.

Andreas Hettich GmbH & Co. KG
 Föhrenstraße 12
 D - 78532 Tuttlingen / Germany
 Phone: +49 (0)7461 705 - 0
 info@hettichlab.com



www.hettichlab.com

Hettich
 LAB TECHNOLOGY